



# 1969 CHEVELLE SS L78 396

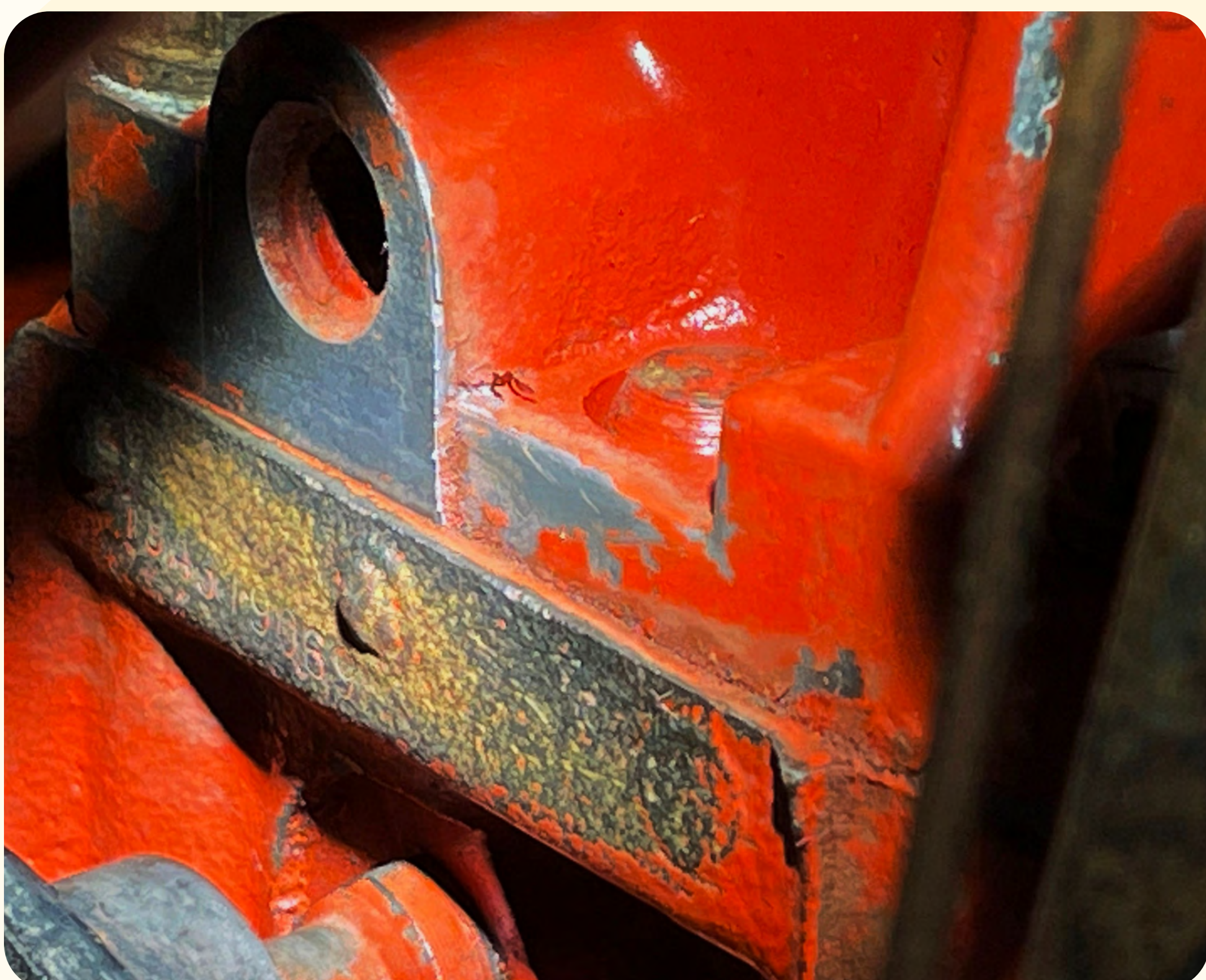
From the mid-1960s to the early 1970s, Detroit produced what many still consider to be the only true “muscle cars.” In 1964, just a few months after Pontiac gave the car-crazed youth the GTO, Chevrolet gave them the Chevelle SS. From 1965 to 1969, the top performance choice was the L78 396 big-block engine. Factory rated at 375 hp, car magazines rated the engine closer to 425 hp. Prominent roles in *Fast and Furious* and *John Wick* have given a love for the Chevelle SS to a new youth market.



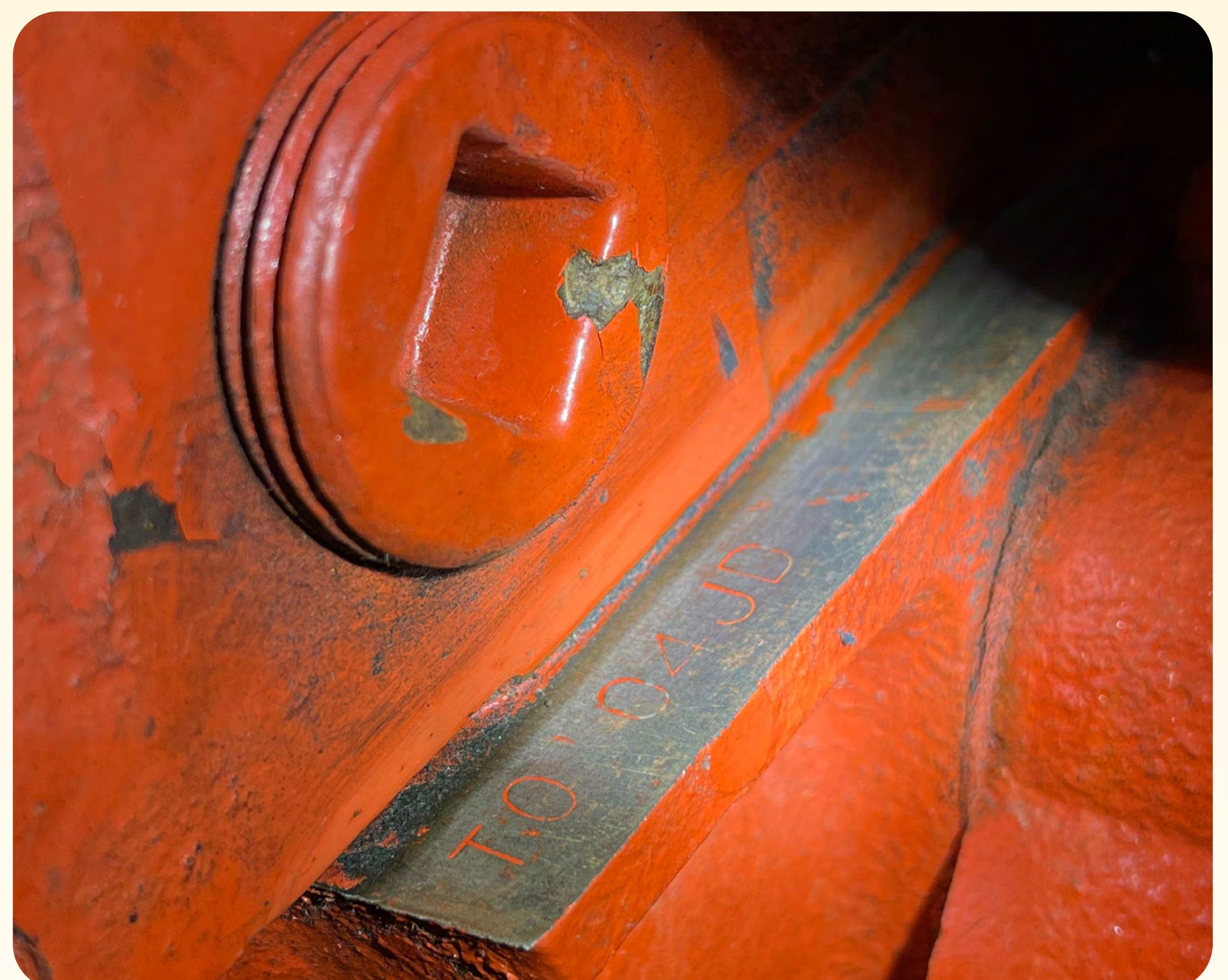
Correct Daytona Yellow (Code 76) only available on Chevelle SS cars



Original “matching numbers” L78 396 V8 (375 HP)



Engine matching VIN 136379A319069



TO — Tonawanda Plant, 04 — 4th month,  
JD — L78 375HP Manual (7,356 produced in 1969)



'69 Chevelle SS 396

**If our competition had one like it we'd have a lot more competition.**

The beguiling thing about this SS 396 Sport Coupe is that it gives you all the comforts you expect in a family car. Soft and spacious seats. New Astro Ventilation that circulates

outside air through the interior without wind noise. Full door-glass styling. But beneath these amenities —it's pure agility. With special flat-cornering suspension astride

wider 14 x 7-in. wheels and wide-oval white-lettered tires. Power disc brakes. Dual chrome-tipped exhausts. And under its twin-domed hood—up to 350 Turbo-Jet hp. It used to be that

only two-car families got driving versatility like this. But now you can get it all in one quick-sized SS 396.



Putting you first keeps us first



69 — 1969, 13637 — Chevelle Malibu Sport Coupe,  
ATL — Atlanta built, 755 — Black Bench,  
76 76 — Daytona Yellow (\$42.15 option only available with SS396)



Muncie 4 speed with Hurst shifter



Correct SS badging and red-line tires

